

---

## The International Symposium INTOVIAN

### Protecting children aged 0 to 3 from domestic violence

#### ACCOMODATION SUGGESTIONS

### Hotels

Book through: [www.booking.com](http://www.booking.com)

Price range – 55€-80€

Suggestions:

#### VIP Executive Villa Rica Hotel \*\*\*\*



Located 550 metres from Lisbon University, rooms at the Villa Rica have a satellite TV. Facilities include an indoor swimming pool and a Spa. All the air-conditioned rooms are brightly decorated and come with a seating area. Rooms for disabled guests are also available. For guests travelling on business, there is a business centre area available for meetings. The Ouro Preto restaurant serves fine Portuguese cuisine but International cuisine is on the menu as well. For light meals and snacks, there is the News Café. Breakfast is served at Jardim Buffet. The Lisbon Airport is 5.6 km away and easy to reach by public transport. For exploring Lisbon, the Entrecampos Subway Station is 200 metres away.

---

#### VIP Inn Berna Hotel \*\*\*



Just 300 metres from Campo Pequeno Metro Station, Vip Inn Berna Hotel offers air-conditioned rooms with a TV. Facilities include a cosy bar and a 24-hour reception. The rooms at Hotel Vip Inn Berna are decorated with wooden furniture and carpeted floors. All rooms have a work desk, a safe, and an en suite bathroom. Every morning, guests can enjoy a local and international breakfast. The bar serves a variety of drinks and refreshments. Room service is available as well. Guests who want to explore Lisbon by car can rent one at Vip Inn Berna's 24-hour reception. The hotel also offers laundry facilities, fax and photocopying services, and currency exchange. The Calouste Gulbenkian Museum is 1 km from Vip Inn Berna Hotel, and Lisbon's historic centre is 3.5 km away.

## VIP Executive Zurique Hotel \*\*\*



Featuring an outdoor pool and a restaurant, this hotel is 100 metres from Entrecampos Train Station. Lisbon city centre is a 5-minute drive away. Offering views over Lisbon, the air-conditioned rooms at the VIP Executive Zurique Hotel include a flat-screen satellite TV and work desk. The private bathrooms provide free toiletries. O Infante Restaurant serves international and traditional Portuguese cuisine. There is a self-service buffet restaurant also available, which offers lighter meals. Drinks are served at the bar and can also be enjoyed by the pool. Located near the Fundação Calouste Gulbenkian's gardens and museums, the Vip Zurique Hotel is a 15-minute drive from Lisbon International Airport.

---

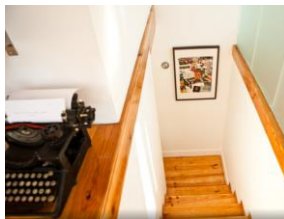
## Apartments

Book through: [www.airbnb.com](http://www.airbnb.com)

Price range – 50€-65€

Suggestions:

### Avenida Apartment & Terrace



A charming, romantic, cosy and stylish apartment with a 360° rooftop terrace located right in the heart of Lisbon. Strategically located at the centre of Lisbon's centre it's only a few steps from glamorous Avenida da Liberdade and walking distance from the city's most popular areas, like Baixa, Chiado, Bairro Alto, Príncipe Real, Castelo and Marquês de Pombal. The subway station “Avenida” is right around the corner, as are the main bus-lines and Rossio train station. The apartment is set on a 1940's building, which was entirely rebuilt in 2005. It's the perfect choice for those who prefer staying in a quiet area, but still only a few meters away from this vibrant city's epicenter. It's completely furnished, with abundant light and very good vibes. It has an exclusive access to a terrace, with a 360° river and city view, that features a wooden deck and outdoor shower.

---

## Liberdade' Poetry Design Apart



The apartment Freedom Downtown is located in the center of Lisbon, just a short walk from the glamorous Avenida da Liberdade and distances, you can go on foot like Alfama, Castelo de S. Jorge, Rossio, Chiado, Bairro Alto or Principe Real. The Metro stations "Marquês de Pombal" or "Avenida" and the stops to major bus routes are about 150 mts. The apartment is situated in a very quiet street, safe and an air typically Lisbon. The location of the apartment allows simultaneous experience of everyday experiences Lisbon having access to a non-tourist circuit of restaurants, shops, grocery stores and products typically Portuguese and while being a few meters from the city's busiest avenue. It offers modern décor, a living room with a charming stone wall and recessed ceiling with recessed lighting. The kitchen and bathroom are new and very well equipped.

---

## Chiado "Loft" 4 Fantastic Place



This apartment in a nearly 400 year's old building was just renovated. You will find yourself in the Chiado area of Lisbon with all its buzz and life. Inside the apartment you will find all the amenities, including air conditioning, heating, cable TV, Wi-Fi, cable internet. The kitchen has its own separate area, but has no door into the living or dining rooms. The apartment has a ceiling height of 2.85m(9.35 feet). There is a flat screen TV and an iPod dock for music. There are two bedrooms, the first one, has a large double bed and a walk in closet, the bedroom also has a large window that overlooks the Rua da Bica de Duarte Belo and to the left city rooftops and river, the second bedroom has 2 single beds and a small no view window. Tram nº 28 passes 25 meters away, and the metro is 350m away.

---

## Hostels

Book through: [www.hostelworld.com](http://www.hostelworld.com)

Price range – 15€-30€

Suggestions:

### Travellers House



Hostelworld guests rated Travellers House as the Best Hostel Worldwide in 2008, 2009, 2010 and 2011, and it's not hard to see why. Hostelworld visitors frequently cite the 'lovely atmosphere' as one of their favourite aspects of the hostel, saying it has a 'very chilled and relaxed environment' and is 'incredibly welcoming'. The Travellers House is ideally located in the most historical and central area of

Lisbon (Baixa), within walking distance to all major attractions and interesting spots of the city, with a superb transport network at your door. In our 250-year-old building, we invite our fellow travellers to relax in our music lounge, enjoy a film in the TV/DVD room or read our books and surf our mega-fast internet, in the reading lounge. Our facilities include bathrooms for men and for women, hot showers 24 hours a day, four common rooms (dining room, Music lounge, TV/DVD area, reading lounge), and free use of the kitchen.

---

### Lisboa Central Hostel



The staff of the Lisboa Central Hostel have an extremely high rating on Hostelworld, no doubt due to their friendliness and vast knowledge of Lisbon. Excellently located in the heart of city, in Marques de Pombal and the famous Avenida da Liberdade, this international hostel provides you with the perfect base for sight-seeing by day and partying by night. All of Lisbon's major hot

spots are easily accessible on foot, thus saving you the cab fare home at night. We provide free Wi-Fi, free Internet/computer access, free breakfast from 8am to 11am, free personal lockers for guarding valuables, free fresh bed linen and towels, free use of the hairdryer, free maps and advice and free tea/coffee-making facilities. There's also a bunch of guide books available to borrow and a host of wonderful hostel activities.

## Unreal Hostel



We have 140 beds in a fresh and young ambient that make it a base point to meet Lisbon by day and night. It is a must-stay hostel for all backpackers if you want to meet loads of people from all over the world and party the night away whenever you want. It is very central location, in Picoas, our staff is renowned for being friendly and welcoming. We provide free continental breakfast for everyone 8.30am -10am, free bed linen, towel and covers for everyone on arrival, free luggage storage on arrival and departure, free lockers in all dorm rooms, free internet access.

---

### HOW TO TRAVEL WITHIN LISBON

The simplest and most cheap way to travel within the city is using the metro/subway and the bus. You need to get a *Viva Viagem* card and use it when you travel by metro or bus.



This card can be purchased and loaded from the automatic ticket machines in the metro network (you can buy it on the airport). You can load your Viva Viagem card as a A) single ticket (price per trip 1.40 €), B) 1 day ticket (price 6€) or C) zapping (price per trip 1.25€). You must validate your card in each trip!

- Metro/Subway map (EntreCampos station – ISCTE-IUL)



For help or additional information do not hesitate to contact: [intovian.symposium@gmail.com](mailto:intovian.symposium@gmail.com)

**We hope to see you in Lisbon!**